



# PUMPS

Technical Datasheet



# PUMPS

## Technical Characteristics

### Motor:

**Power ratings:** See label on motor.

**Insulation:** Class F Operation: IP 55

**Current:** Triphase (See label ratings)

**Consumption:** See label

**Frequency:** See label

**R.P.M.:** 2885

**Shaft:** Stainless steel (AISI 316)

**Bearing:** Ball bearing

**Atmospheric temperature:** Max. 40 °C

### Pump:

**Water temperature:** Max. 50 °C

**Max. pressure:** 2 bars

**Impeller model:** Closed

**Type of seal:** Mechanical retainer.

**Diffuser:** Synthetic Material (FRPP)

**Prefilter Lid:** Polycarbonate

**Suction dia:** Socket 90 mm

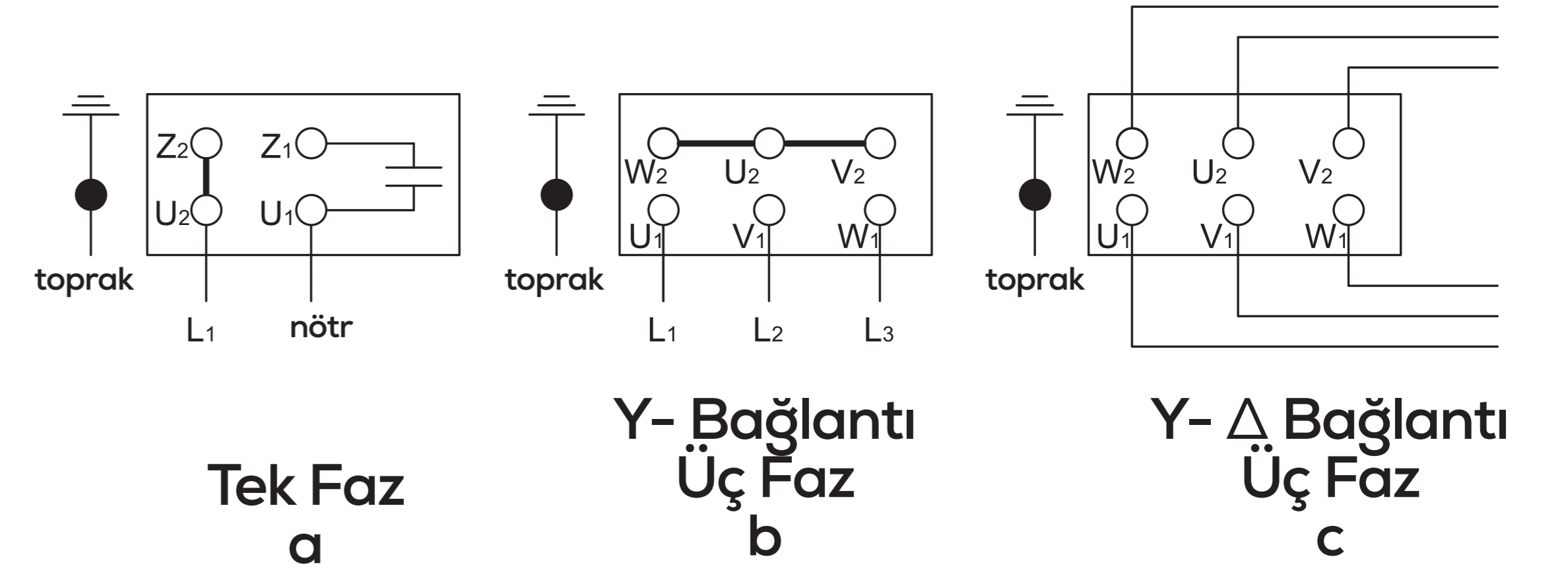
**Supply dia:** Socket 110 mm

## General Informations

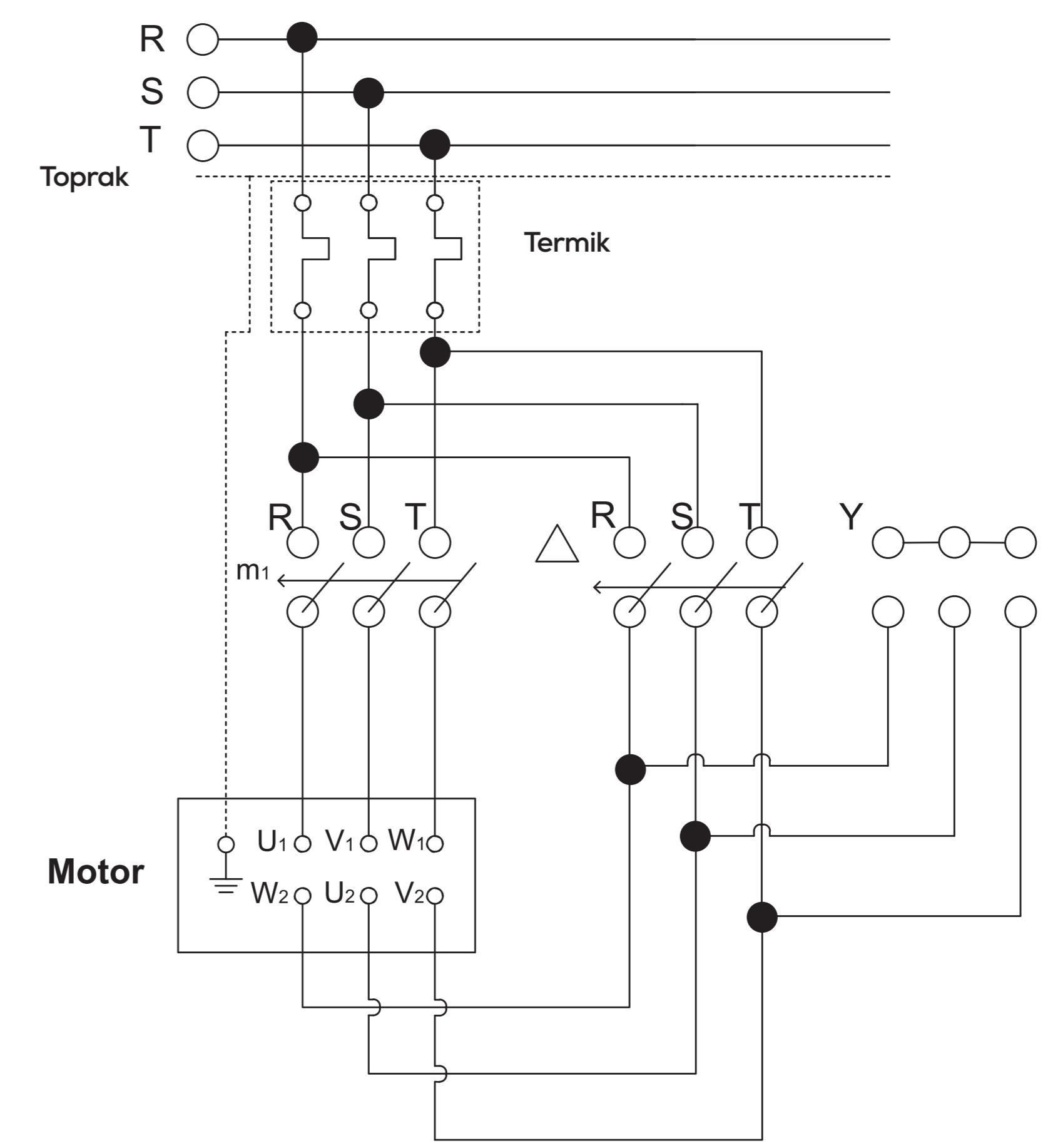
The diameters of pipes advised mount to inlet and outlet

POWER	SUCTION LIN PIPE DIAMETER	DISCHARGE LINE PIPE DIAMETER
0,75 hp pump	63 mm	63 mm
1 hp pump	75 mm	63 mm
1,5 hp pump	90 mm	63 mm
2 hp pump	90 mm	75 mm
3 hp pump	110 mm	90 mm
3,5 hp pump	110 mm	90 mm
4,5 hp pump	125 mm	110 mm
5,5 hp pump	140 mm	110 mm
7,5 hp pump	160 mm	125 mm
10 hp pump	200 mm	160 mm
12,5 hp pump	225 mm	200 mm
15 hp pump	250 mm	200 mm

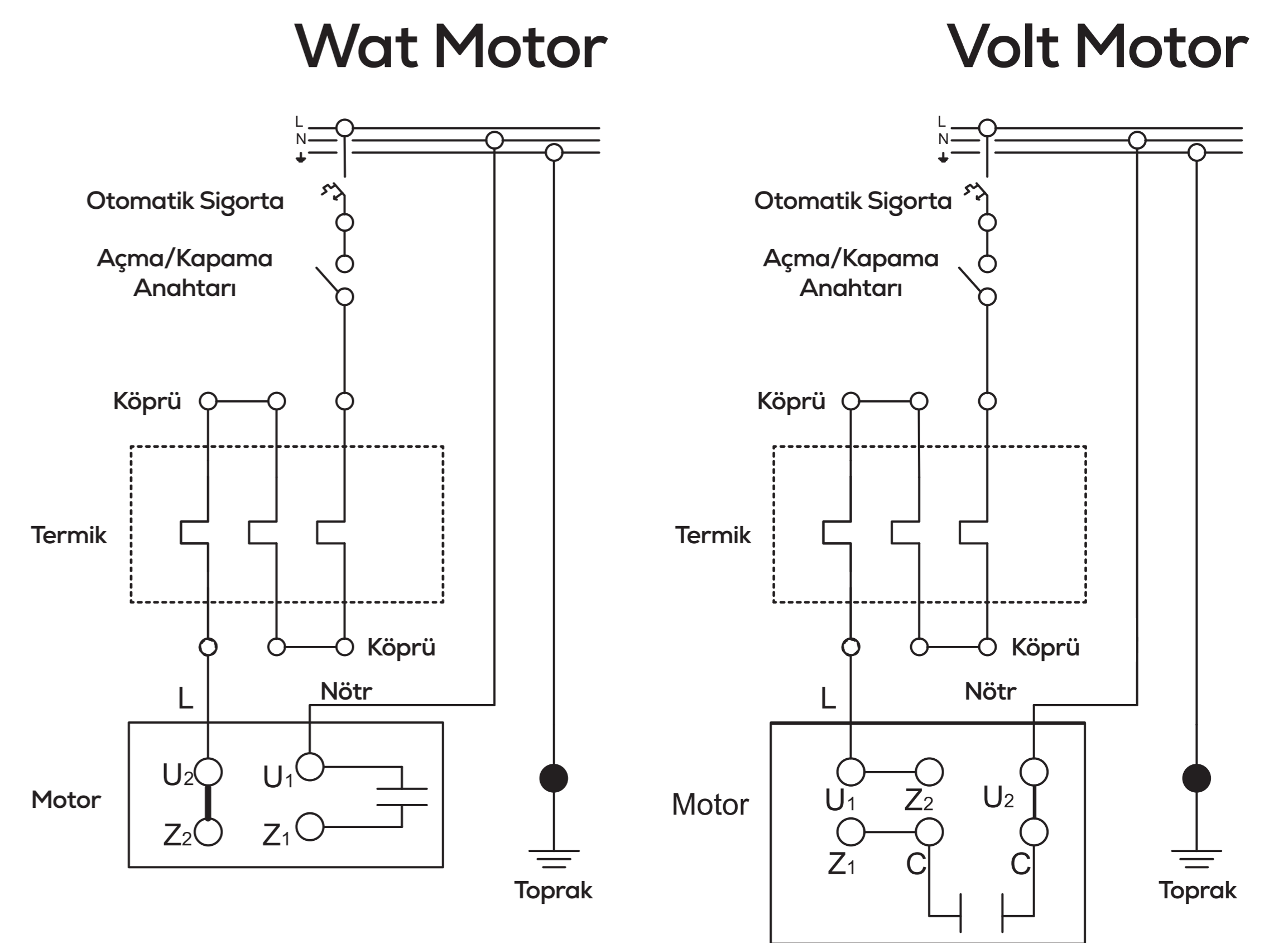
POWER OF MOTOR 0,75-1-1,5-2-3 hp	POWER OF MOTOR 1-1,5-2-3-3,5- 4,5-5,5 hp	POWER OF MOTOR 7,5-10-12,5-15 hp
Power supply 1 phase 220 V	Power supply 3 phase 380 V	Power supply 3 phase 380 V
Connection (a)	Y-Connection(b)	Y/Δ- Connection (c) (3 sec. work Y than go to Δ)



## 7,5-10-12,5-15 hp Y/Δ Electrical Connection



## Monophase motor power diagram

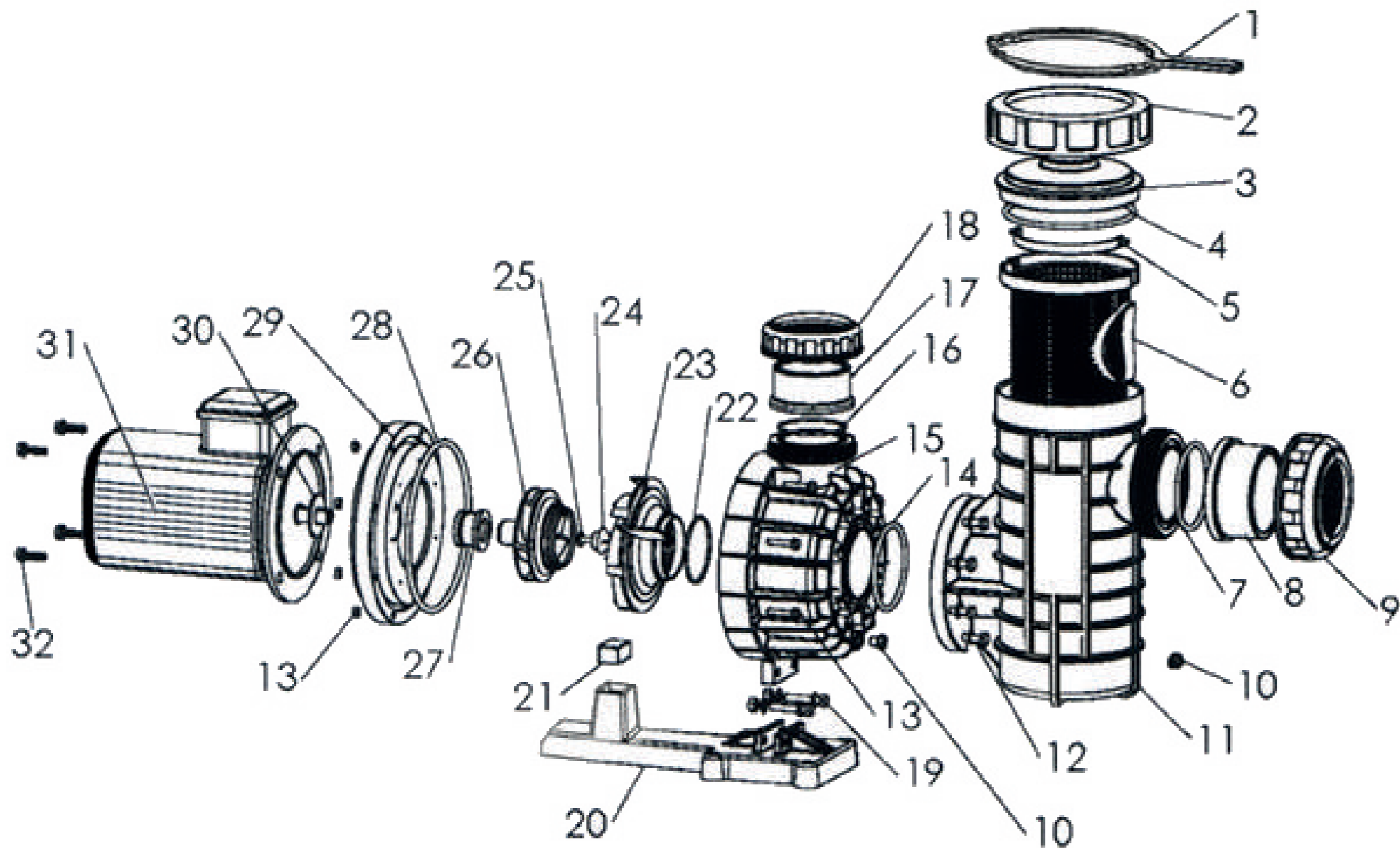


FLOW SPEED	LINE	SPEED(m/sn)
	Suction Line	1,5
	Discharge Line	2,5
	%1,5 Sloping Line	0,75
	Collector	0,5

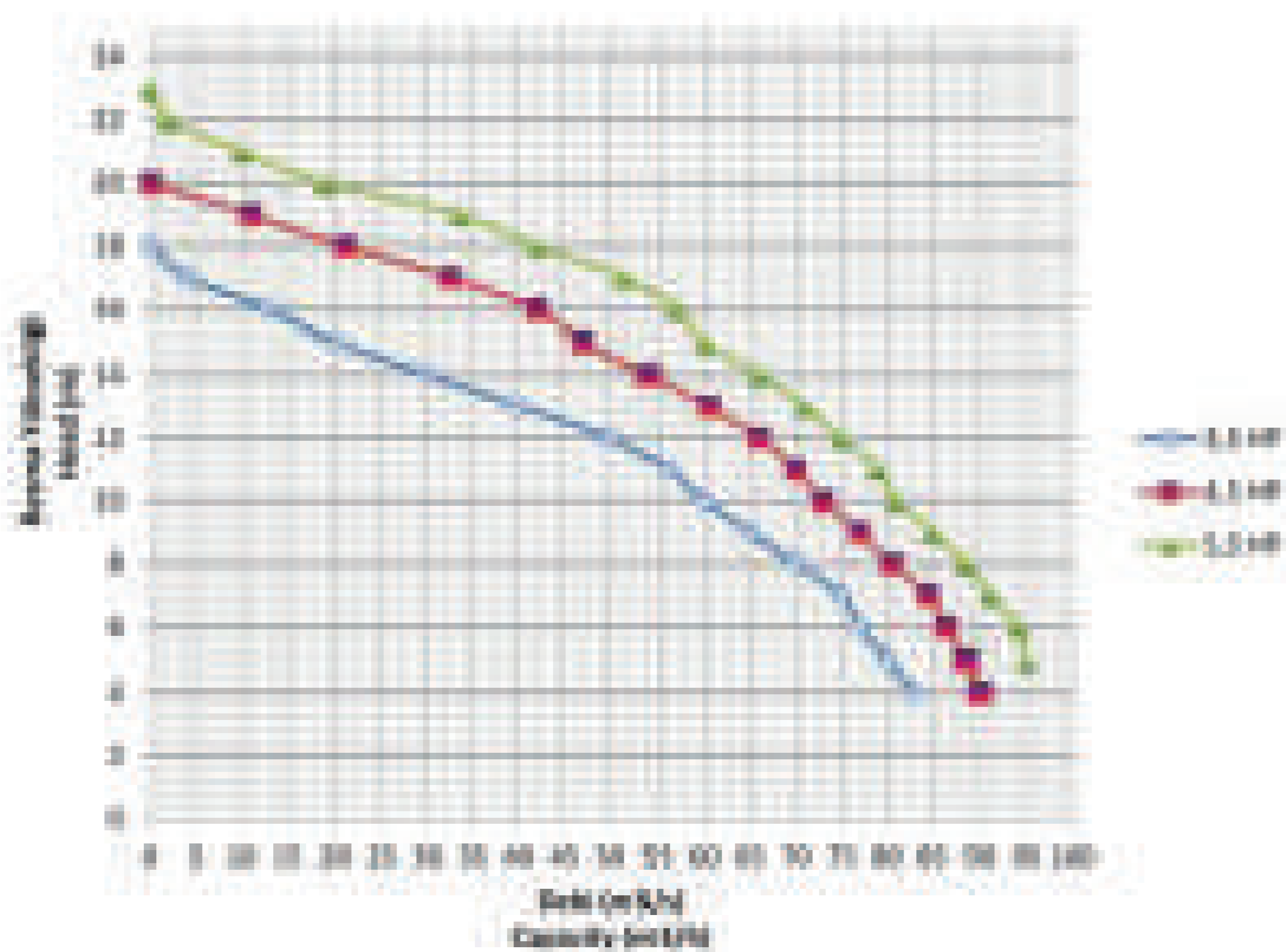
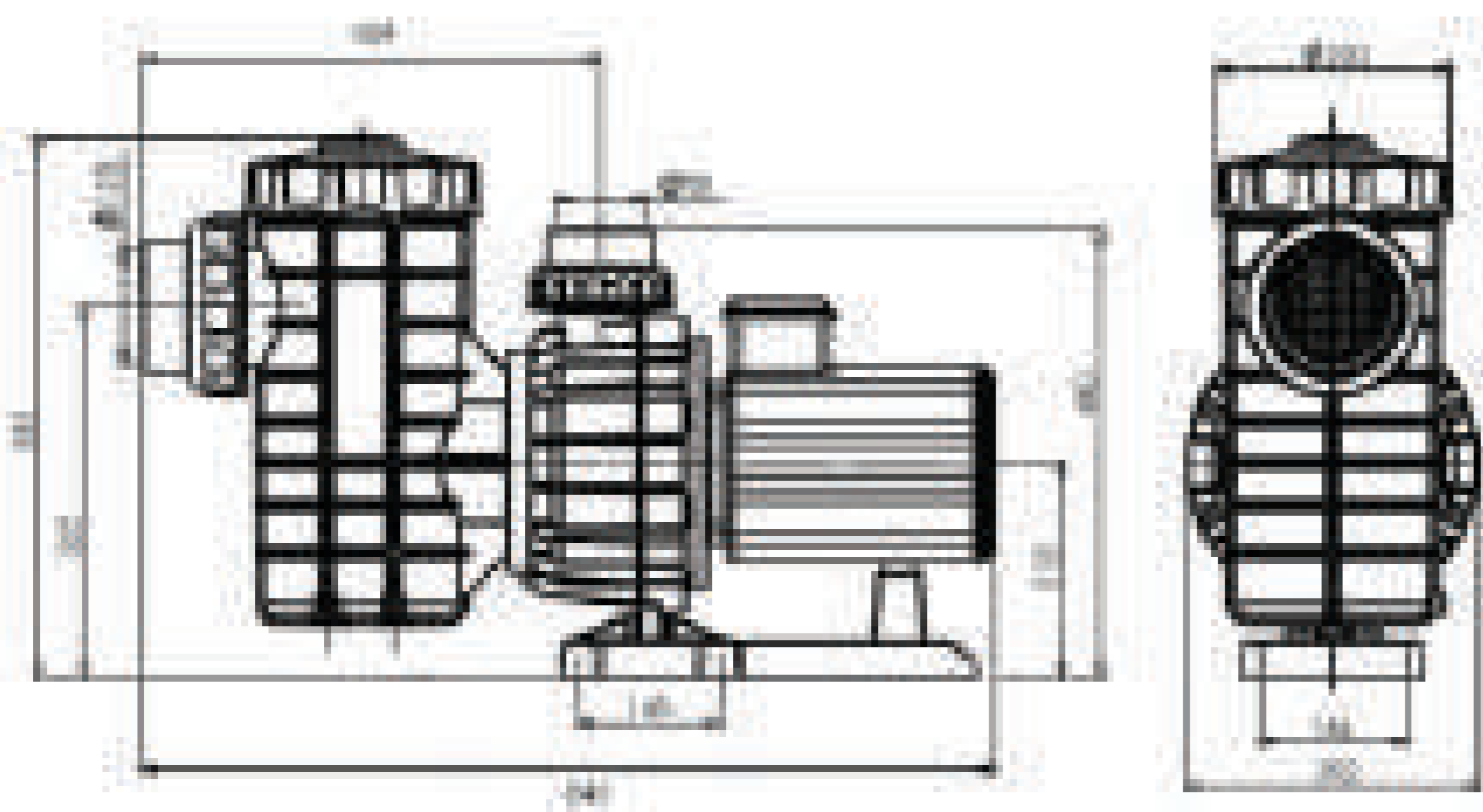


# PUMPS

## Storm Model Pump 3,5-4,5-5,5 hp



### Dimensions and Weight 3,5-4,5-5,5 HP Pumps



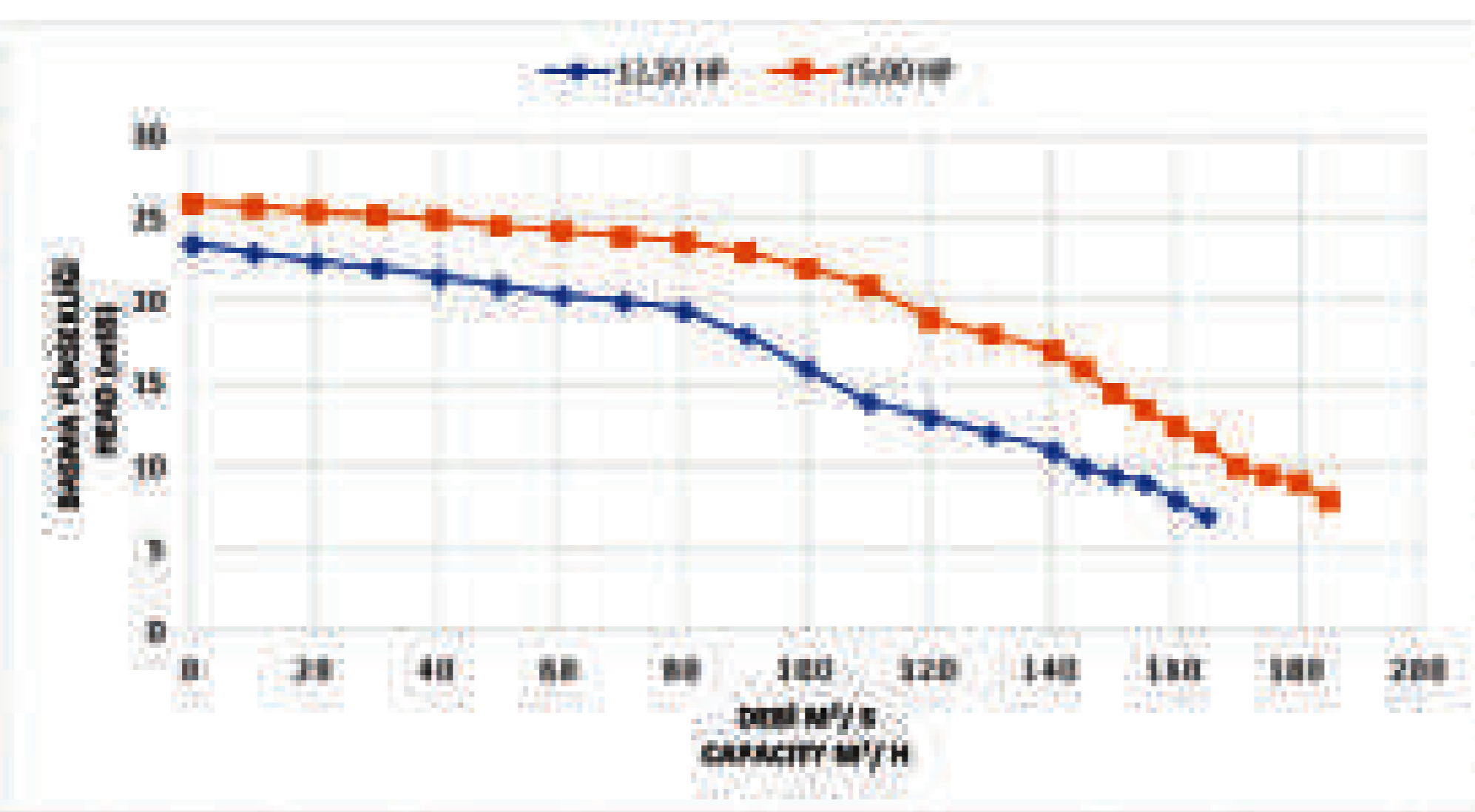
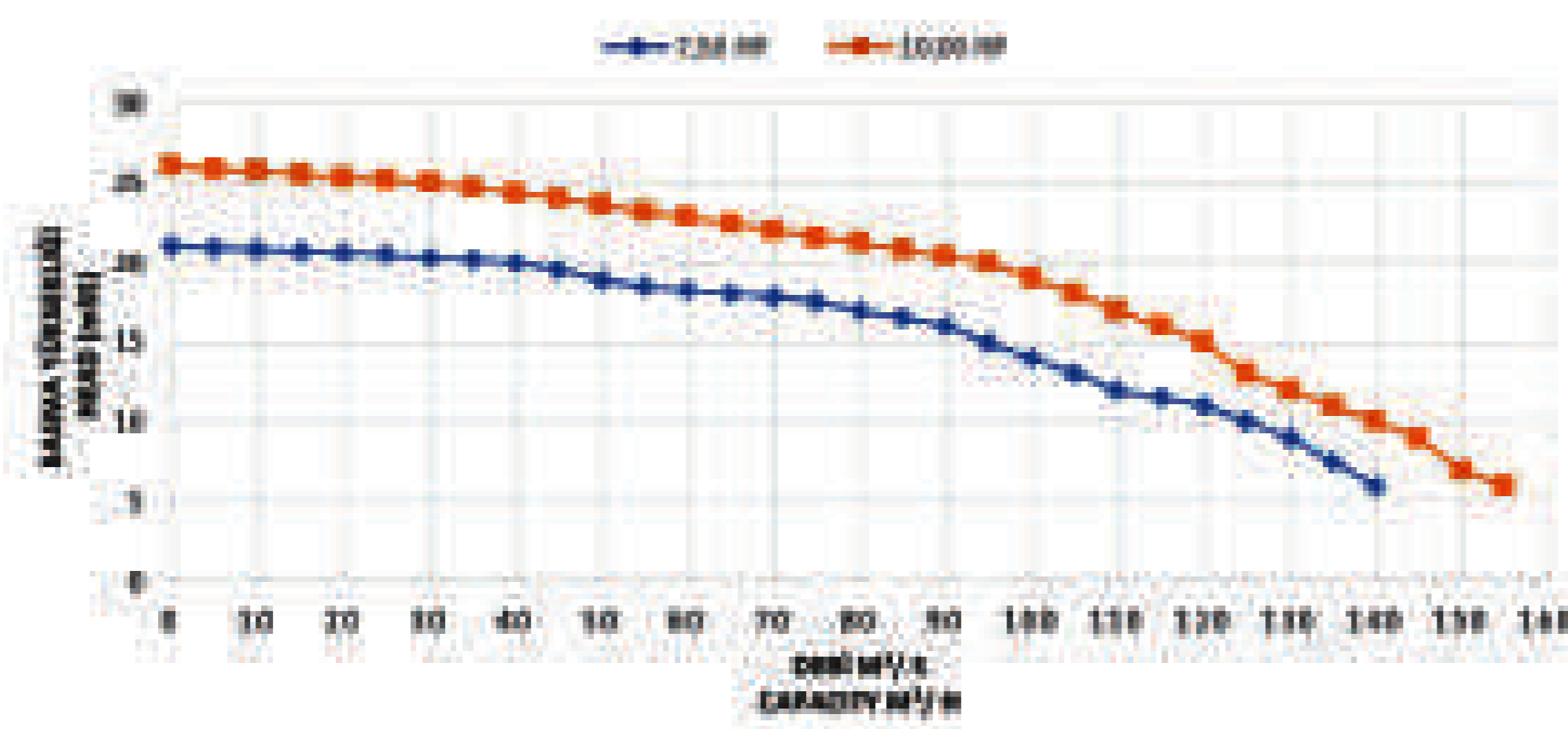
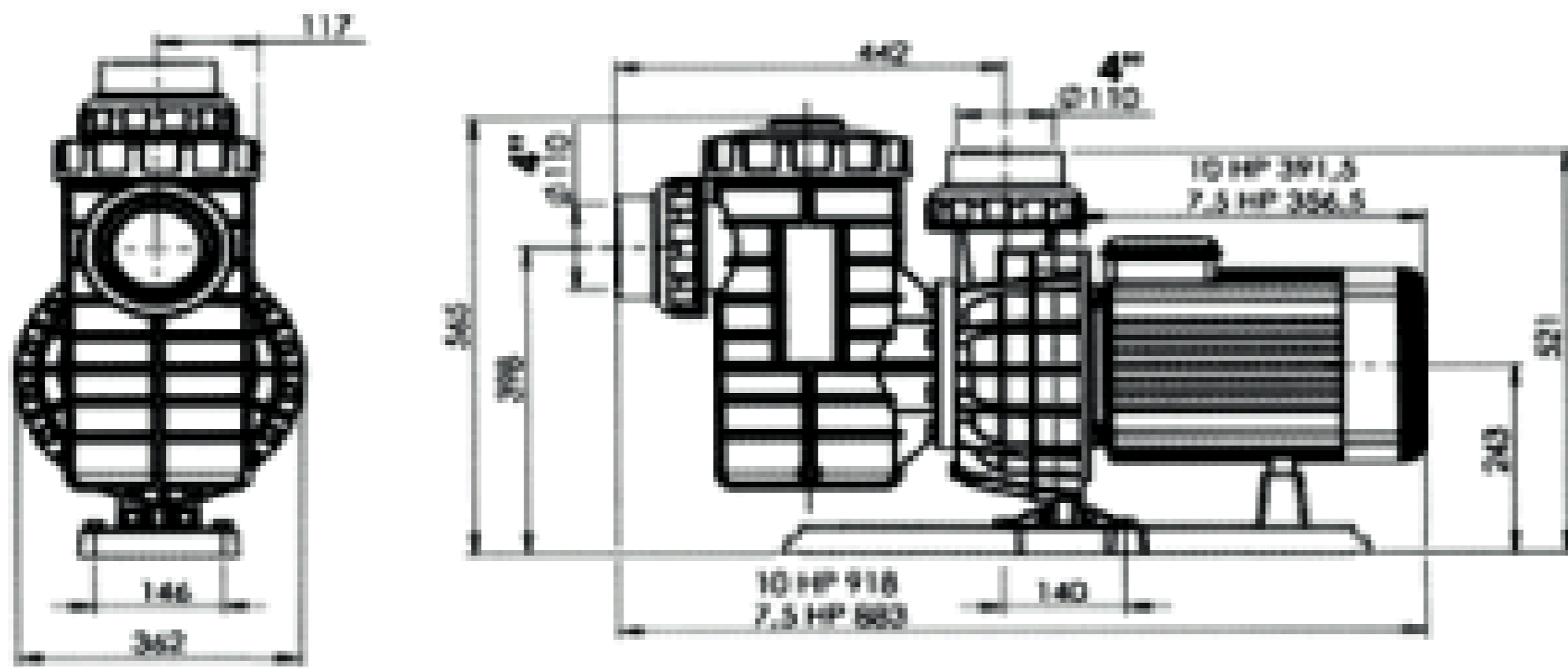
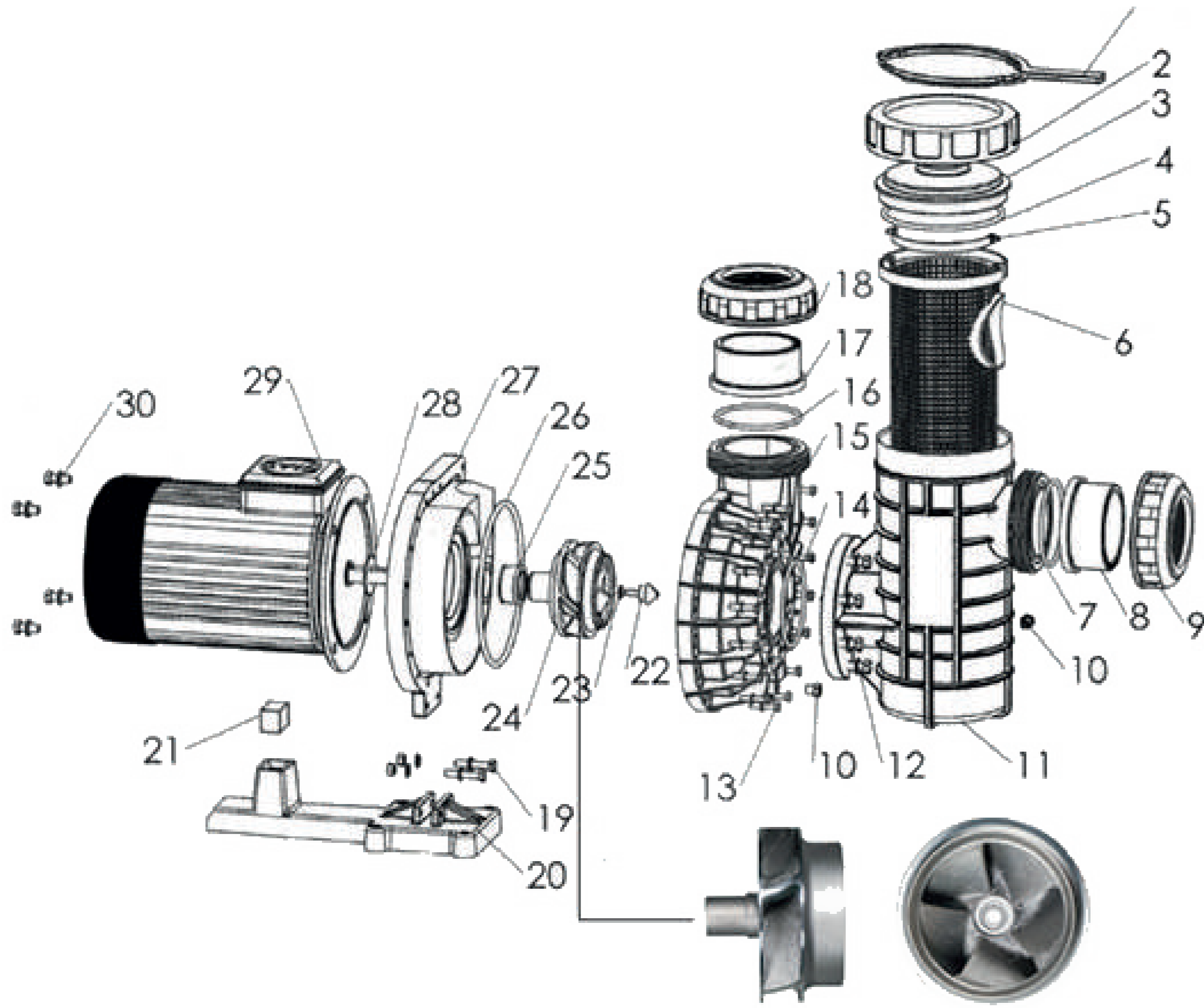
NO	Part Name
1	Cover Key
2	Prefilter Nut
3	Prefilter Cover
4	Prefilter Under-cover O-Ring
5	Basket Handle
6	Prefilter Basket
7	Pipe Connection O-Ring
8	Pipe Connection
9	Nut
10	ÖnfiPrefilter Cap
11	Prefilter Body
12	Prefilter Screw
13	Body Screw
14	Filter Connection O-Ring
15	Body
16	Pipe Connection O-Ring
17	Pipe Connection
18	Nut
19	Foot Connection bolt
20	Foot
21	Foot Rubber
22	Diffuser O-Ring
23	Diffuser
24	Impeller Spring Screw
25	Impeller Spring O-Ring
26	Impeller
27	Mechanical Ceramic Seal
28	Body O-Ring
29	Back Body
30	Fling Circle
31	Elektrical Motor (Trifaze)
32	Motor Connection Screw



# PUMPS

Storm Model  
Pump 7,5-10-12,5-15 hp

7,5-10-12,5-15 HP Pumps



NO	Part Name
1	Cover Key
2	Prefilter Nut
3	Prefilter Cover
4	Prefilter Under-cover O-Ring
5	Basket Handle
6	Prefilter Basket
7	Pipe Connection O-Ring
8	Pipe Connection
9	Nut
10	ÖnfiPrefilter Cap
11	Prefilter Body
12	Prefilter Screw
13	13 Body Screw
14	Filter Connection O-Ring
15	Body
16	Pipe Connection O-Ring
17	Pipe Connection
18	Nut
19	Foot Connection bolt
20	Foot
21	Foot Rubber
22	Impeller Spring Screw
23	Impeller Spring O-Ring
24	Impeller
25	Mechanical Ceramic Seal
26	Body O-Ring
27	Back Body
28	Fling Circle
29	Elektrical Motor (Trifaze)
30	Motor Connection Screw

